



MONTHLY MEMBERSHIP PROGRESS REPORT

Results as of: 4/30/2016

Multiple District 27

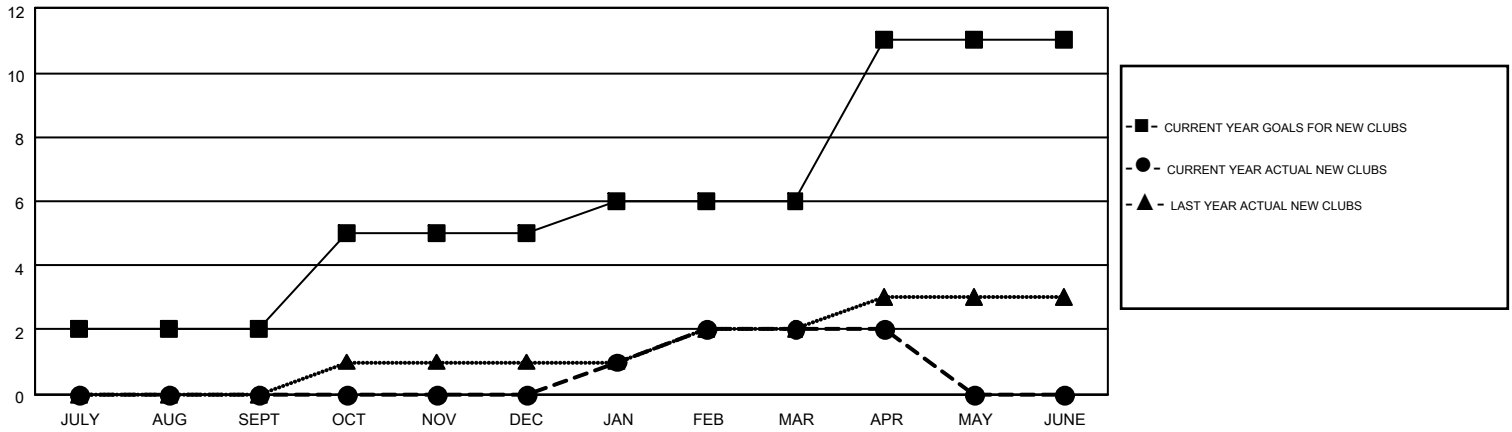
LOCATION: WISCONSIN

GMT: JUDY HANKOM

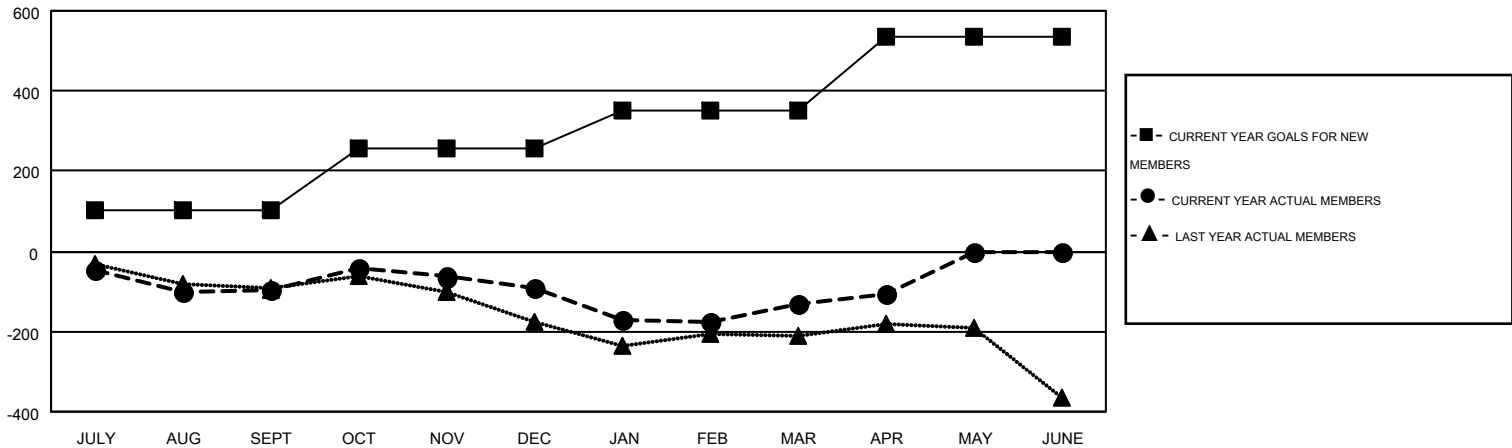
GMT CA 1

Clubs					Members				
RESULTS FOR 2015-2016					RESULTS FOR 2015-2016				
QUARTER	NEW CLUB GOAL	NEW CLUBS	DROPPED CLUBS	NET GAIN/LOSS	QUARTER	NEW MEMBER GOAL	CHARTER AND NEW MEMBERS ADDED	DROPPED MEMBERS	NET GAIN/LOSS
JULY/AUG/SEPT	2	0	1	-1	JULY/AUG/SEPT	103	331	429	-98
OCT/NOV/DEC	3	0	1	-1	OCT/NOV/DEC	155	415	408	7
JAN/FEB/MAR	1	2	1	1	JAN/FEB/MAR	93	422	461	-39
APR/MAY/JUNE	5	0	1	-1	APR/MAY/JUNE	184	136	111	25

GOALS AND ACTUAL NEW CLUBS CUMULATIVE



GOALS AND ACTUAL MEMBERS CUMULATIVE



DROPPED CLUBS: 4	366 CLUBS OF 537 ADDED 1 OR MORE NEW MEMBERS	<u>GENDER DISTRIBUTION</u>			
<u>DROPPED MEMBERS</u>		MALE	14,361 (78.81%)		
DECEASED	186	FEMALE	3,861 (21.19%)		
CLUB CANCELLED	11	CLICK HERE FOR HEALTH ASSESSMENT DATA			
OTHER	1,206			FAMILY UNIT MEMBERS	3,283
TOTAL	1,403			HEAD OF HOUSEHOLD	1,613
		NON-HEAD OF HOUSEHOLD	1,670		